

## Dixon® Boss LPS Hammer Union Nuts

### One-Piece

#### Features

- Long-lasting and dependable nut
- All nuts are interchangeable with reliable brands
- 6" and 8" sizes have 4-lug design for more surface area to hammer

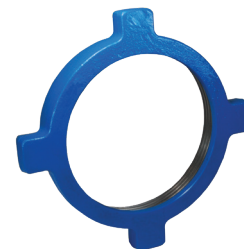
#### Specification

- Cold working pressure: Figure 100 **1,000 PSI**, Figure 200/206 **2,000 PSI**

Size	Figure	Forged Steel AISI Standards Part #
1"	200/206	HU206100N
2"	200/206	HU206200N
3"	100	HU100300N
	200/206	HU206300N
4"	100	HU100400N
	200/206	HU206400N
6"	100	HU100600N
	200/206	HU206600N
8"	100	HU100800N
	200/206	HU206800N



3" and 4"



6" and 8"

D

### Two-Piece

#### Applications

- Replacement for damaged hammer union nuts
- Used with male one-piece flange adapters

#### Features

- Lug design provides enlarged surface area to hammer
- Repair nut is pinned and bolted for perfect alignment
- Nut can be installed on pre-existing hammer union assembly
- 4" Figure 200/206 nut is interchangeable with reliable brands
- 6" and 8" Figure 100/200/206 nuts are interchangeable with reliable brands
- Available in other series and sizes; contact Dixon

#### Specification

- Cold working pressure: Figure 50 **500 PSI**, Figure 100 **1,000 PSI**, Figure 200/206 **2,000 PSI**

Dixon recommends using Loctite® Threadlocker Red 271™ when bolting together two-piece hammer union nuts to ensure that bolts do not loosen when in service. Option two is to weld the seams of the split nut. Bolt torque recommendation is 60 ft. lbs.



figure 200 / 206



figure 100

Size	Figure	Forged Steel AISI Standards Part #
4"	split nut, figure 200/206, blue (includes bolts)	HU200400RN
5"	figure 50, red, nut	HUS500N
	split nut, figure 50, black (includes bolts)	HUS500RN
6"	split nut, figure 100, black (includes bolts)	HU100600RN
	split nut, figure 200/206, blue (includes bolts)	HU200600RN
8"	split nut, figure 100, black (includes bolts)	HU100800RN
	split nut, figure 200/206, blue (includes bolts)	HU200800RN

### Three-Piece

#### Features

- Replacement for damaged hammer union nuts
- Used with male one-piece flange adapters
- Can use tools/wrench made for loosening and tightening nuts

#### Specification

- Cold working pressure: Figure 200/206 **2,000 PSI**

Size	Figure	Forged Steel AISI Standards Part #
4"	split nut, figure 200/206, blue (includes bolts)	HU200400RN3

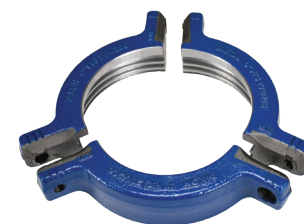


figure 200 / 206