

## Betts Wet-R-Dri™ Butterfly Valves

**Application**

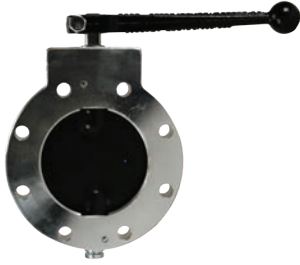
- Designed for handling liquid, gaseous, or dry products

**Features**

- Has a positive stop in the open and closed position
- Detent spring and ball assist in holding the disc in the open and closed position
- Drilling fits TTMA recommended standards
- Opens by turning hand 1/4 turn counter clockwise

**Specification**

- Temperature range: 0°F to 400°F (-18°C to 204°C)



**Manual**

Size	Maximum Working Pressure PSI	Extruded aluminum body with FKM-B disc Part #
2"	75	WD201ALVB
3"		WD301ALVB
4"		WD401ALVB
5"		WD501ALV
6"		WD601ALV
8"		WD801ALV



**Metering**

Size	Maximum Working Pressure PSI	Extruded aluminum body with FKM-B disc Part #
2"	75	WD206ALVB
3"		WD306ALVB
4"		WD406ALVB
5"		WD506ALV
6"		WD606ALV
8"		WD806ALV

**Replacement Handle**

Part #	Extruded aluminum body with FKM-B disc Part #
28957ALEY	replacement handle for 2", 3", 4", and 5" manual handle valves
25933AL	replacement handle for 6" and 8" manual handle valves
28981ALEY	replacement handle for 2", 3", 4", and 5" metering handle valves
26287AL	replacement handle for 6" and 8" metering handle valves

NOTE: For flange dimensions, diagrams and additional information please reference [dixonvalve.com](http://dixonvalve.com).

